



ARC 5.5

- ARC 5.5 towers offer an impressive 5.5" diameter brewery pipe style look
- High quality, durable, powder coated surface or brushes SS, for years of perfect look
- Glycol ready. 3/8" copper glycol lines provide excellent cold transfer
- DirectCool® technology provides optimal cooling at the point of dispense and helps pour beer without foaming
- Double O-RING leak proof shanks construction prevents leaks even if shank is loose
- All Stainless Steel 316L contact with the Beer for the ultimate in draft purity. 1/4" SS316L Beer Lines
- Multi-layer moisture and thermal insulation, aluminum foil tape for optimum cooling transfer and moisture barrier



AVAILABLE TOWER OPTIONS

Available mounting variations

- Ceiling
- Wall
- Short Legs
- Custom

Also available other options by request

All our towers available with LED medallions

- Top LED, Front LED

Available Finish

- Brushed SS, Brushed Bronze, RAL powder coat*

ARC 5.5

Specifications

Part No	Faucets	W width	Finish	Cooling	Price	WEIGHT**	
						LBS	KG
ARC-5.5-6	6	44.68" (1136mm)	SS, RAL*	Glycol or AIR***			
ARC-5.5-8	8	50.68" (1287mm)	SS, RAL*	Glycol or AIR***			
ARC-5.5-10	10	56.68" (1439mm)	SS, RAL*	Glycol or AIR***			
ARC-5.5-12	12	62.68" (1592mm)	SS, RAL*	Glycol or AIR***			
ARC-5.5-14	14	68.68" (1744mm)	SS, RAL*	Glycol or AIR***			

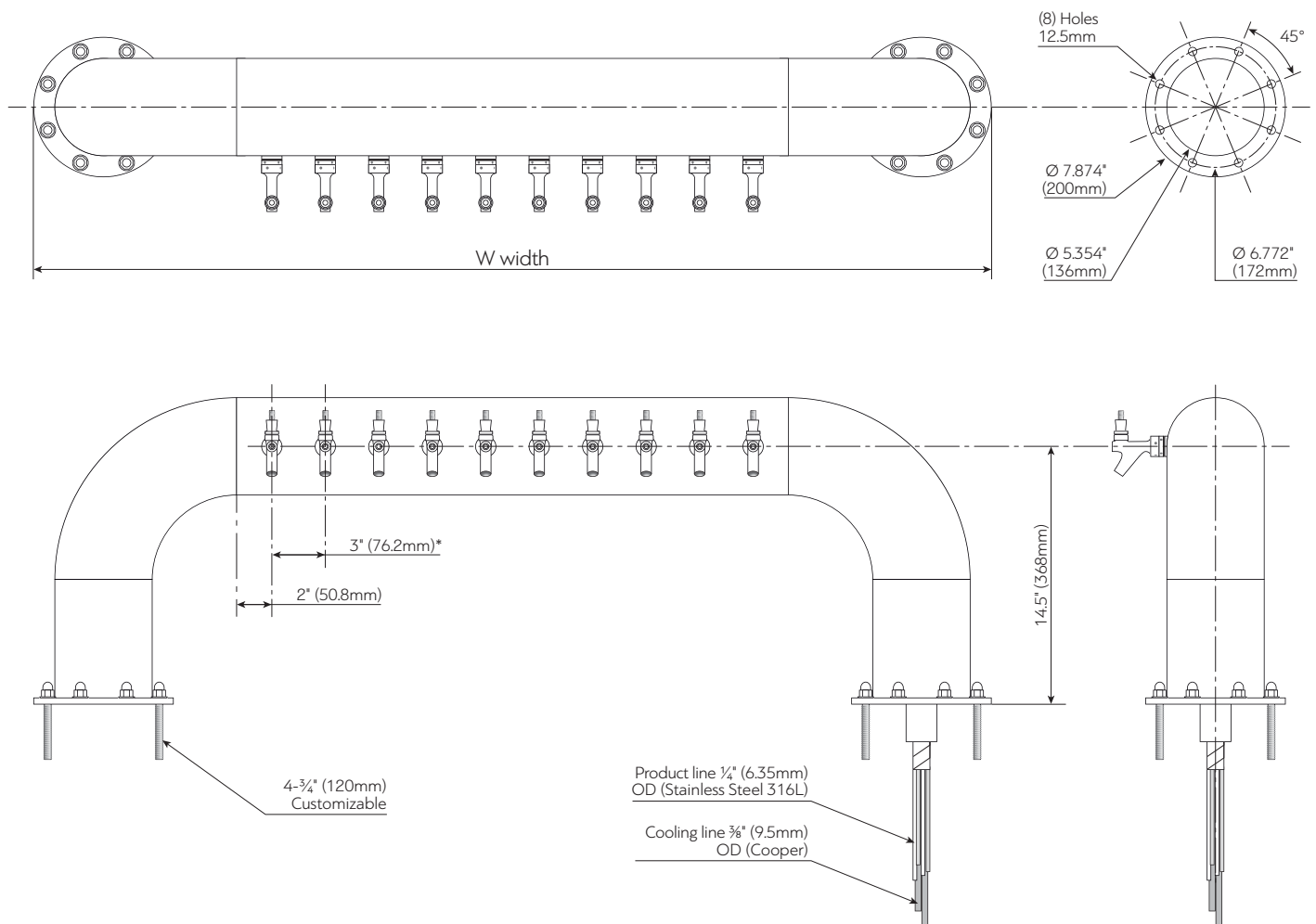
* RAL Powder coat / Available colors: www.ralcolorchart.com

** Approximate Netto Weight Without Packaging

*** Air Cooling By Request

Dimensions

MOUNTING GUIDE



* Available 2" and 4" shank distance

Contact us:

draftbeertowers@gmail.com

WhatsApp: +371 26005582

www.bwtap.com